

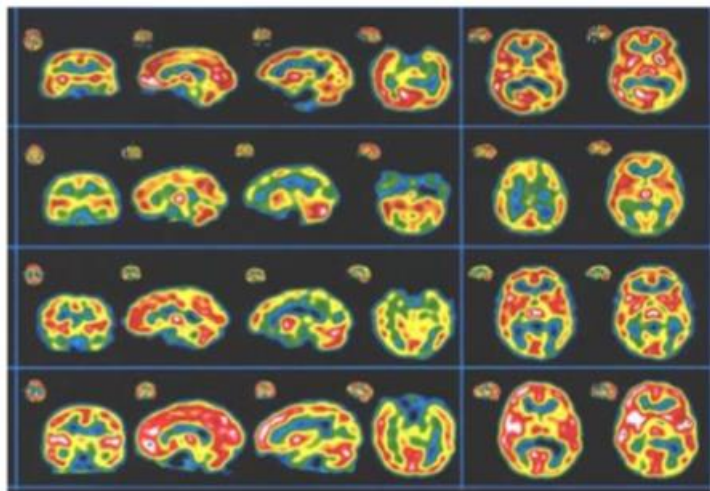
Standard for Excellence

*Training, Financing and Expert
Guidance are all available*

How would real brain evidence affect your everyday patient care?

Now you can add Brain Imaging to a Psychiatric practice

With three decades of experience in every facet of imaging, Eclipse provides unique benefits to the psychiatric practice. From Assessment through Camera Selection and Installation; Certification with Nuclear Regulatory Commission and network with senior researcher in order to design one's own research protocols.



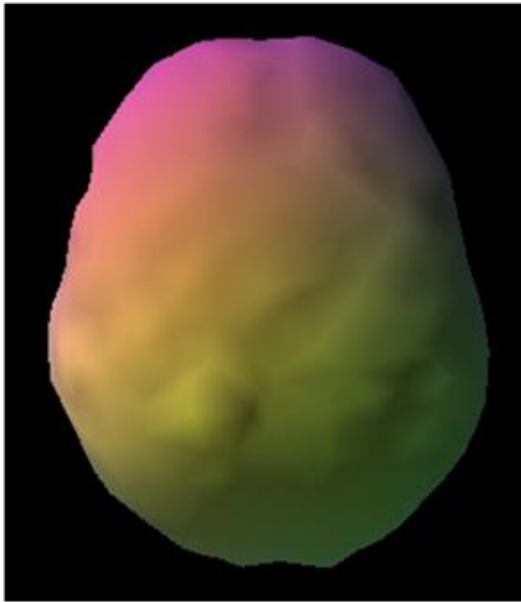
Significant databases of functional brain (SPECT)* scans related to behavioral problems are being cataloged now-the future is here. Read any journal, imaging technology is here. Amen Clinics and others have demonstrated it is the path to brain health.

Now you can see existing multiple comorbid conditions. SPECT is clinically helpful in understanding brain injury, dementia, depression, anxiety, ADD, suicidal behavior, substance abuse, obesity and more.

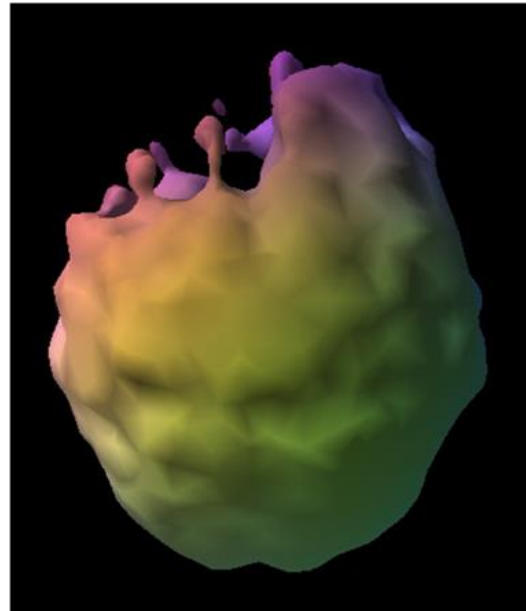
SPECT (Single Photon Emission Computed Tomography) is an imaging technology in use for over 20 years in the diagnosis and treatment of many disorders. Tremendous advances have further developed this technology to help patients and professionals better understand and treat various mental health

disorders. There are now more reasons than ever to seriously consider brain imaging.

You will find it extremely worthwhile to learn more about our MultiCam 3000eco, or refurbished PRISM 3000XP.



Healthy Brain



Brain Trauma

Images courtesy Amen Clinics

ECLIPSE
Systems, Inc.